

GEOTAB®

# GO Focus Pro™ with TVI Auxiliary Cameras and Zero Latency Monitor TVI

## Quick start guide

Rev. A1 – 03/2026



Don't have an Auxiliary camera?

See the [GO Focus Pro Quick Start Guide](#)

---

## Warnings

**⚠ Professional Installation Required** – Installation of this product requires that the installer have sufficient technical knowledge and expertise for installation and integration into modern vehicles, i.e. Certified Geotab Installer certification or equivalent.

**! IMPORTANT:** Professional installation (Certified Geotab® Installer or equivalent) is required for the safe and proper installation of this product (harness and/or IOX). The installer must have sufficient technical knowledge and expertise for the respective installation.

**WARNING!** Always read and follow all safety information, including Important Safety Information and Limitations of Use, before harness and/or IOX installation. Disconnect the GO Device from the vehicle before installation and reconnect it after installation (see [link](#)). Failure to follow these instructions and warnings can result in loss of vehicle control and serious injury or vehicle damage.

**WARNING!** All in-vehicle devices and related cabling must be securely fastened and kept clear of all vehicle controls, including gas, brake and clutch pedals. This requires the use of a cable tie when securing the device or any extension harness to the OBD connector, securing both sides of the harness. If you do not use a cable tie, vibration in the vehicle can lead to a loose connection which could indirectly cause the vehicle's engine computer to fail, loss of vehicle control and cause serious injury. Inspect devices and cabling regularly to ensure all devices and cables remain securely attached.

**WARNING!** Ensure the GO Focus Pro is installed securely and the installation location does not affect the driver's visibility to see the road, mirrors, or vehicle controls. Failure to do so may interfere with vehicle operation resulting in property damage, collisions leading to death or serious personal injury.

**! IMPORTANT:** The GO device must be disconnected from the vehicle prior to installation.

## Important Safety Information and Limitations of Use

For the latest version of the Limitations of Use, please visit: <https://qtb.link/k6Fp0w>.

You must always select the right Telematics hardware suitable for your specific installation environment and vehicle use.

**WARNING!** Your in-vehicle devices must be kept clear of debris, water, and other environmental contaminants. Failure to do so may result in units malfunctioning or short-circuiting that can lead to a fire hazard or vehicle damage or serious injury.

**NOTICE:** This product does not contain any user-serviceable parts. Configuration, servicing, and repairs must only be made by an authorized reseller or installer. Unauthorized servicing of these products will void your product warranty.

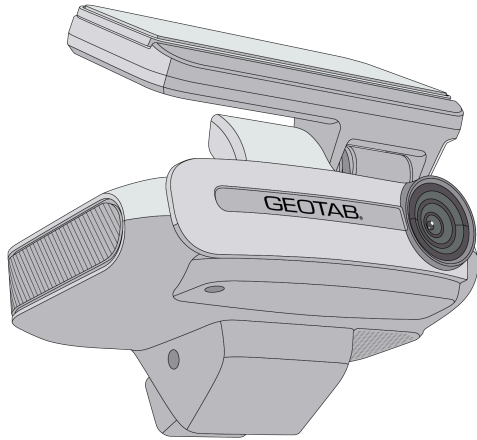
**WARNING!** Do not attempt to install, configure, or remove any product from any vehicle while the vehicle is in motion or otherwise in operation. All installation, configuration, or removal must be done only in stationary vehicles which are securely parked. Attempting to service units while being operated could result in malfunctions or accidents, leading to death or serious personal injury.

**WARNING!** If at any point after an in-vehicle device is installed a warning light illuminates on the vehicle dash or the vehicle stalls or has a marked drop in performance, shut off the engine, remove the device, and contact your reseller. Continuing to operate a vehicle with these symptoms can cause loss of vehicle control, and serious injury.

**WARNING!** Do not attempt to remove the devices from the vehicle in which they are originally installed for installation in another vehicle. Not all vehicles share compatibility, and doing so may result in unexpected interactions with your vehicle, including sudden loss of power or shutdown of the vehicle's engine while in operation or cause your vehicle to operate poorly or erratically and cause death or serious injury and/or vehicle damage.

---

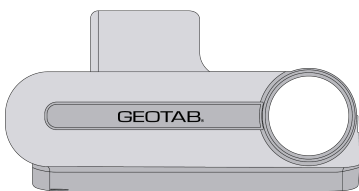
## In the box



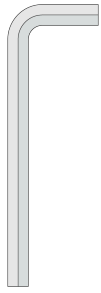
1 x GO Focus Pro



1 x GO Focus Pro - Spare Mounting Bracket (SPR-GFPROBRK)



1 x GO Focus Pro - Spare I/O Cover (SPR-GFPROIOCVR)



1 x Hex key



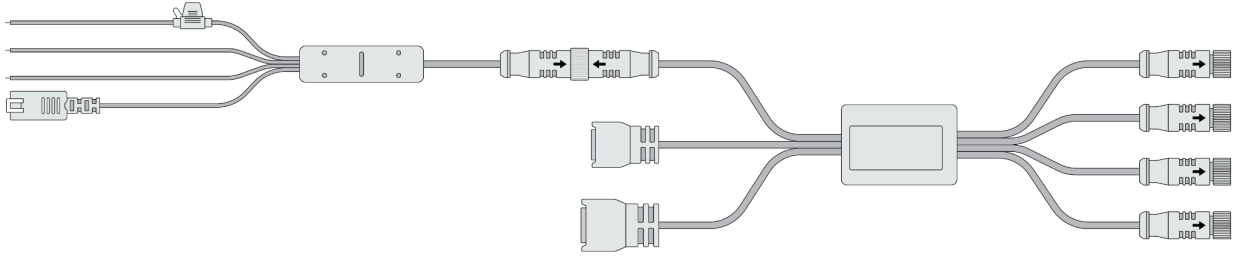
1x Cleaning wipe



4 x Bi-Facial Privacy Stickers

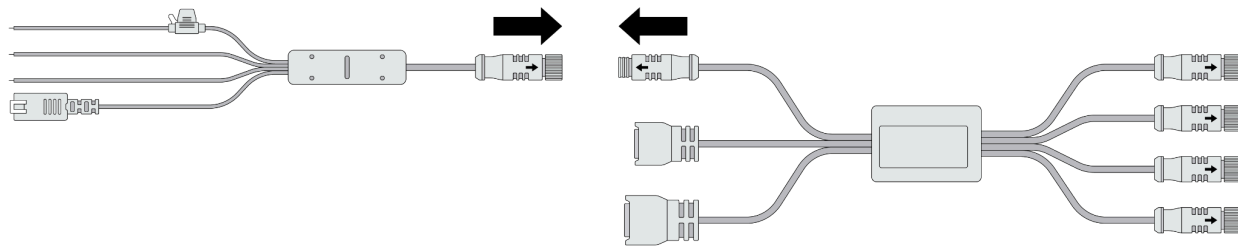
## Hub Cable (required)

**NOTE:** GO Focus Pro comes without a cable harness. To properly install your GO Focus Pro with the TVI Auxiliary Camera(s), the following cable harness is required:



1 x GO Focus Pro - Hub Cable - 3-Wire (HRN-TVI-14-3W)

**NOTE:** This harness comes as two pieces that must be connected (see below):



## Auxiliary accessories

GO Focus Pro supports:

- Up to 4 TVI auxiliary cameras
  - **GO Focus Pro - External Aux Rear Cam - TVI** (HDW-EXTCAM-TVISQ)
  - **GO Focus Pro - External Aux Side Cam - Large Bracket - TVI** (HDW-EXTCAM-TVILB)
  - **GO Focus Pro - External Aux Side Cam - Small Bracket - TVI** (HDW-EXTCAM-TVISB)
- TVI Monitor and accessories
  - **GO Focus Pro - Zero Latency Monitor - TVI** (HDW-TVIMONITOR)
  - **GO Focus Pro - Zero Latency Monitor - Splitter Cable - TVI** (HRN-TVI-12-DISP)

---

**1** Download the Geotab Video app

The Geotab Video app is required to adjust the dashcam mounting and road and cabin cameras. Please install the Geotab Video app before mounting the GO Focus Pro device. Failure to mount the device in the optimal location and properly configure the camera will result in performance issues for the GO Focus Pro device.

#### Download IOS app



#### Download Android app



Don't have an Auxiliary camera?

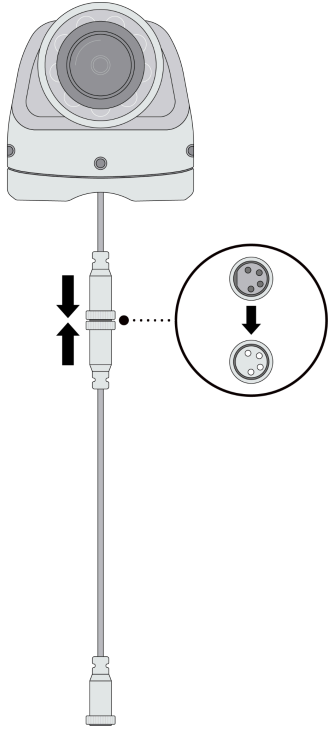
See the [GO Focus Pro Quick Start Guide](#)

---

## 2 Add an Extension Cable to the TVI Auxiliary Camera

Connect the TVI Auxiliary Camera to the extension cable (option for 5m or 10m).

**NOTE:** The maximum cable length from the TVI Auxiliary Camera to GO Focus Pro is 35m / 115ft.



## TVI Auxiliary Camera sensor

When installing the TVI Auxiliary Camera, the sensor positioning is critical. Regardless of how you install the camera, ensure the sensor is pointing downward before tightening.



**NOTE:** An upward-facing sensor will produce an inverted image.

<b>Correct sensor position</b>	<b>Incorrect sensor position</b>
--------------------------------	----------------------------------

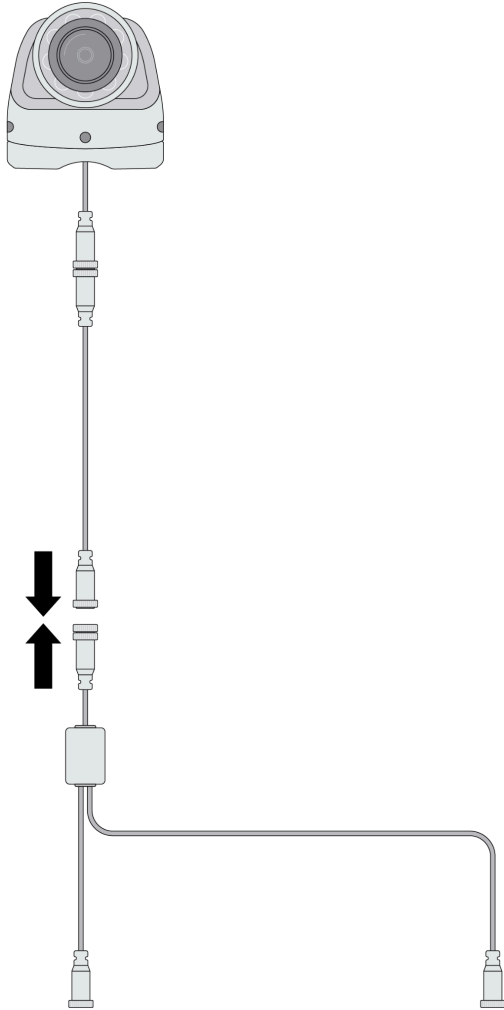




---

### **3** Connect the Extension Cable to the Splitter

Connect the other end of the extension cable to the single-connector end of the Splitter cable.



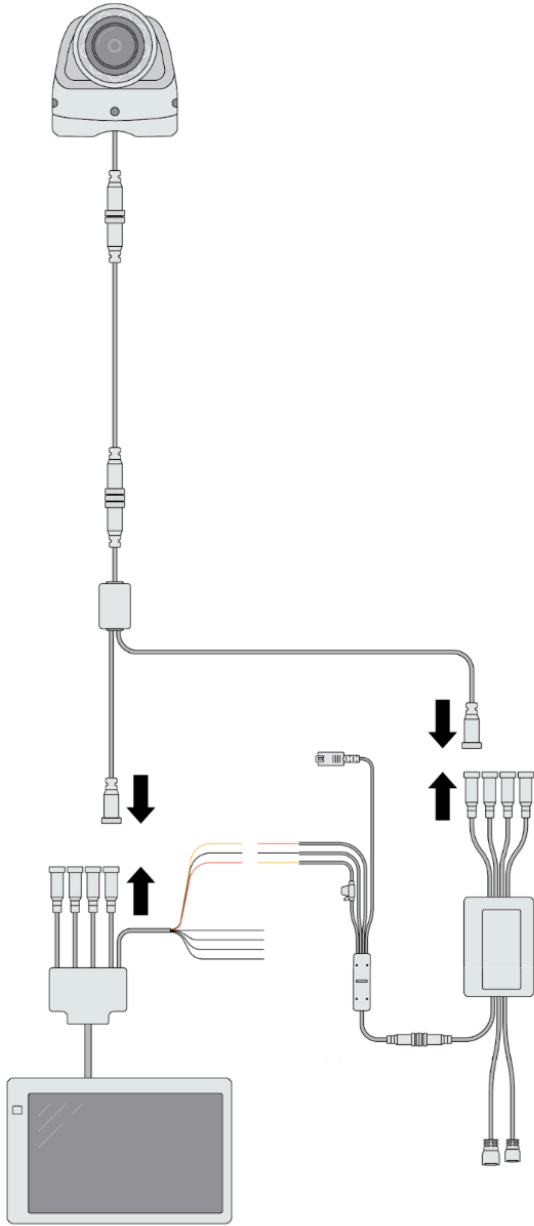
---

## 4 Connect the Splitter to the Hub Cable and TVI Monitor

Connect the two-connector end of the Splitter cable to the TVI Monitor and Hub Cable:

- Connect the cable labeled TVI POWER to the TVI Monitor
- Connect the cable labeled TVI to the Hub Cable

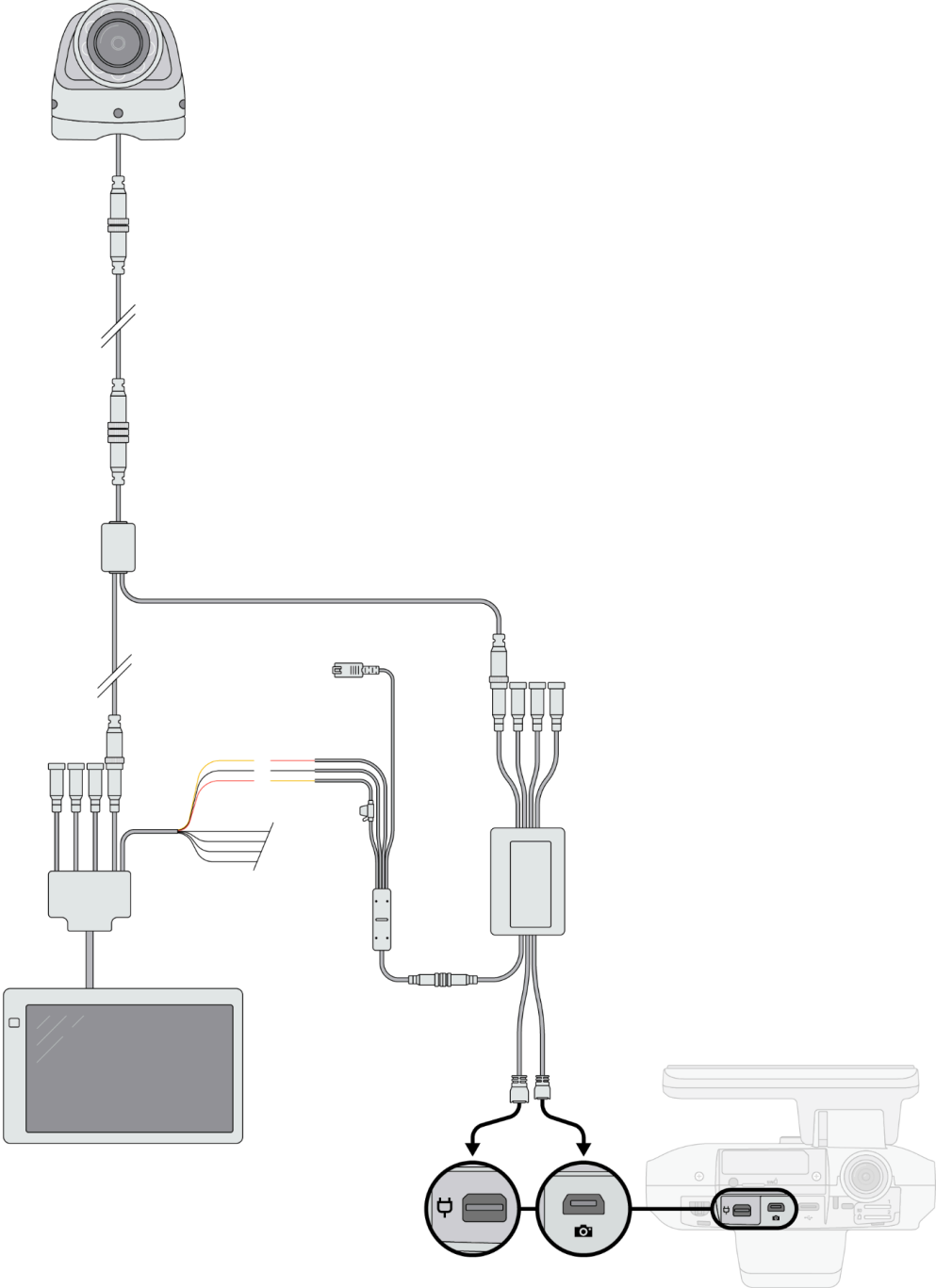
**NOTE:** Both Splitter Cable outputs must be connected to the same input (for example, Cam 1) on both the TVI Monitor and Hub Cable.



---

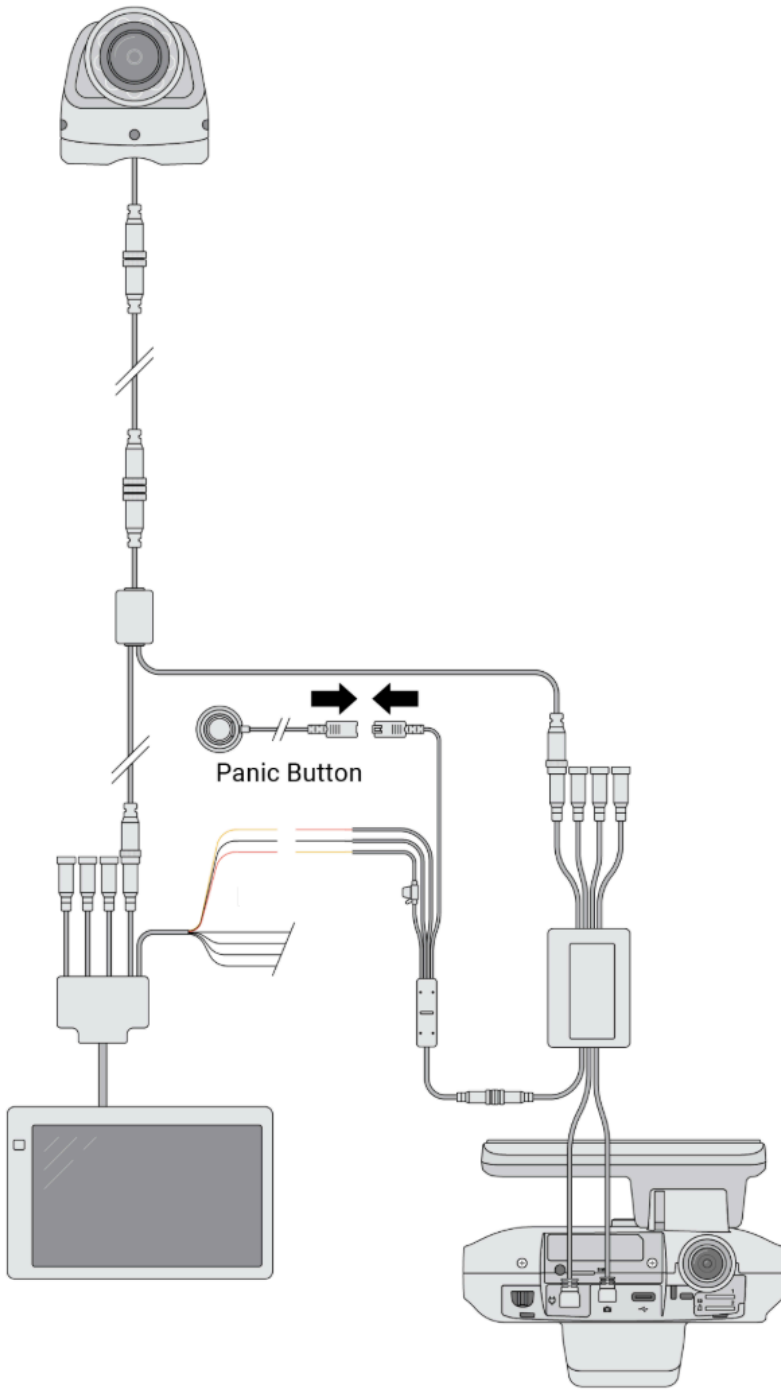
**5** Connect Hub Cable to the GO Focus Pro

There are multiple connectors on the Hub Cable. Connect the Hub Cable's power connector and data connector to the matching ports on the GO Focus Pro.



## **6** Connect the optional Auxiliary Panic Button to the Hub Cable (optional)

If you do not have an Auxiliary Panic Button (HRN-IOXGFOBD-PBTN) skip to the next step.



## 7 Power Connections to the Fuse Box

Connect the Go Focus Pro into the vehicle power system via the power connector on the Hub Cable.

Plug the three wires into the fuse box, following the vehicle's fuse box instructions.

Repeat the same for the TVI Monitor's 3-wire power cable.

**NOTE:** The color codes are different for each device.

### Hub Cable - 3-Wire

**Yellow** - Connect B+ wire to constant power (Battery+).

**Black** - Connect GND wire to ground

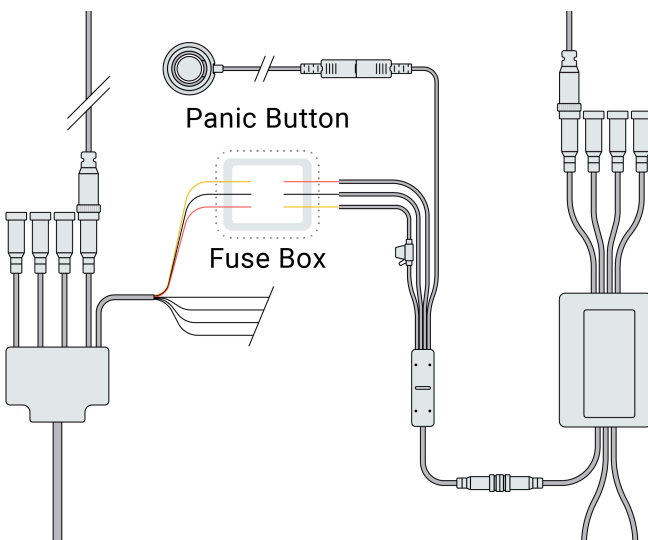
**Red** - Connect ACC wire to ACC (on when engine is on). For rare vehicles without an ACC interface, connect ACC wire to ground.

### Zero Latency Monitor TVI

**Red** - Connect DC Input wire to constant power (Battery+).

**Yellow** - Connect ACC wire to ACC (on when engine is on).

**Black** - Connect GND wire to ground.

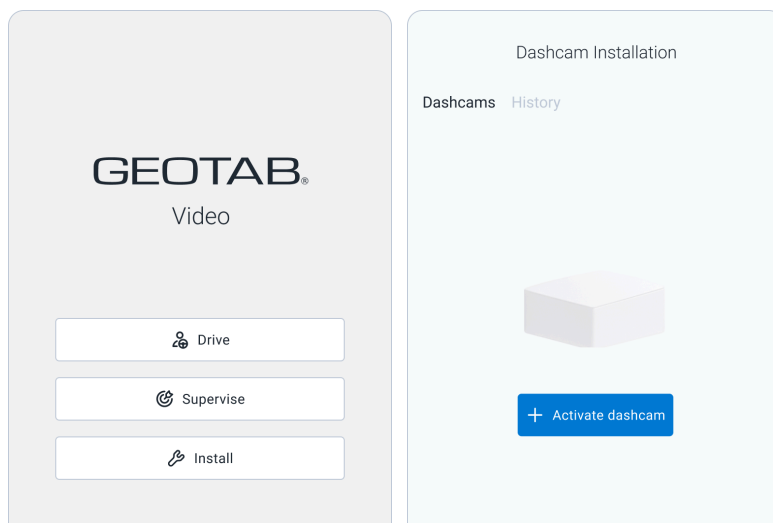


## 8 Configure with Geotab Video app

Open the **Geotab Video app** on your phone and tap **Install** to log in or sign up.

**NOTE:** You don't need an existing account, you can use an unregistered email address to log in.

Tap **Activate dashcam**, then follow the prompts on the app to mount and adjust the dashcam.



**NOTE:** ⚠ **Do not remove the adhesive strip** until you are directed to do so in the app.

**NOTE:** Before finalizing the mounting position:

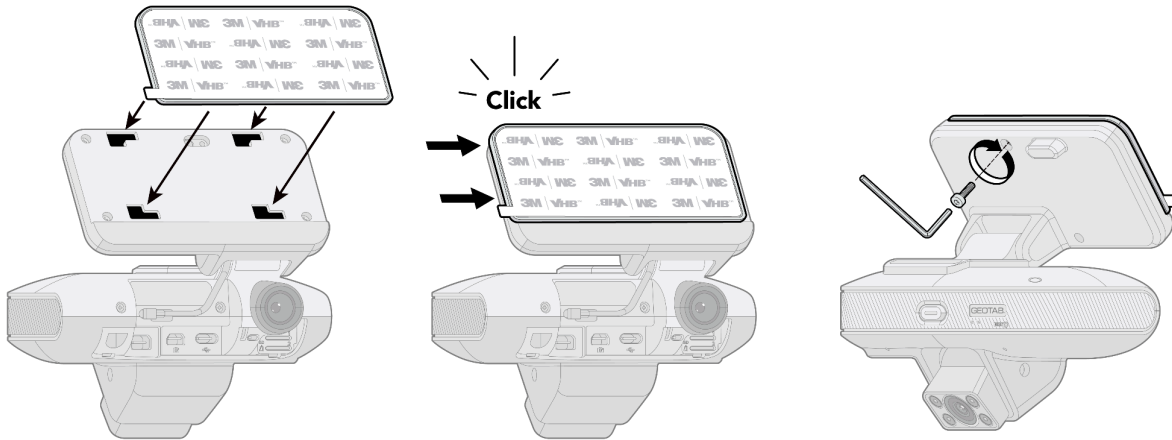
- Lower the sun visor completely to ensure it doesn't block the camera's view.
- Ensure that the rear-view mirror does not block the camera's view of the driver's face.

---

## 9 Attach the mounting bracket

Attach the mounting bracket to the back of the GO Focus Pro device. Push the bracket in until you hear a click.

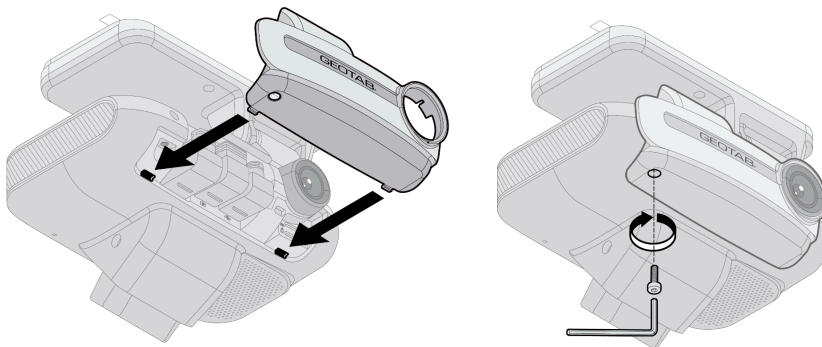
**⚠ Do not remove the adhesive strip yet.**



## 10 Attach I/O cover

After the GO Focus Pro has been properly mounted, attach the I/O cover to secure the cable.

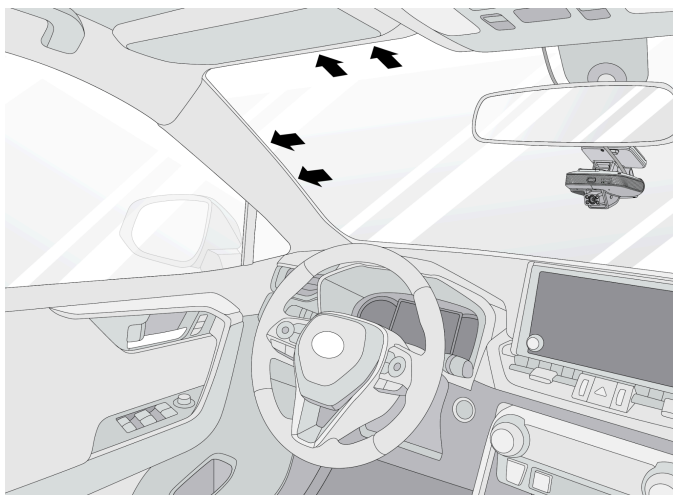
Tighten the cover locking screw with the provided hex key.



---

## 11 Hide visible wiring

Route any visible wiring under the roof liner and down behind the driver-side.



---

## 12 Review the installation report


After completing the camera installation and configuration, the installation report will be available in the **Geotab Video app**.

To review your installation report, tap on the **History** tab in the Geotab Video app.

< Installation Details

Dashcam History 🔍 📅

Jan 21, 2026



XXXXXXXXXXXXXXXXX  
GO Focus Pro  
Aug 25, 2025 3:42 PM

>

**GEOTAB Video**

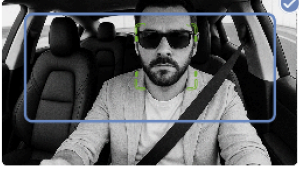
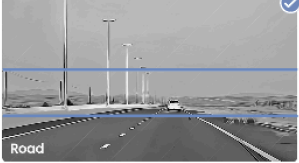
### Installation Report

**Installation Details**

Customer Name John Doe	Vehicle VIN 123456789012345
Installed On Aug 25, 2024 3:42 PM	Installed At Toronto, ON
Installed By johndoe@geotab.com	

**Camera Details**

Dashcam GO Focus Plus	S/N G812345678901
GO S/N GO1234567890	Status at Install Connected to Power

**GEOTAB®**

www.geotab.com'

- Support documents:
- [GO Focus Pro Support Document](#)
  - [G09 Support document](#)
  - [G09B Support document](#)